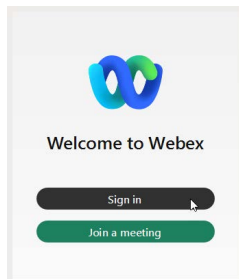


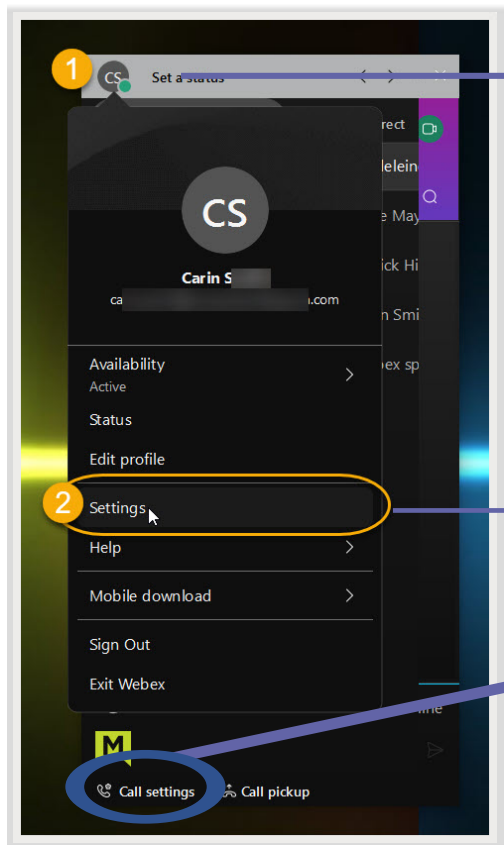
Connect with Webex App Settings



Sign In

In Windows, click the **Connect with Webex** icon on the desktop or go to **Start > Webex** and click on the icon. On Mac, go to the **Applications** folder and click on **Webex**.

Click **Sign In** and enter your validated email and then your username | password credentials when prompted.

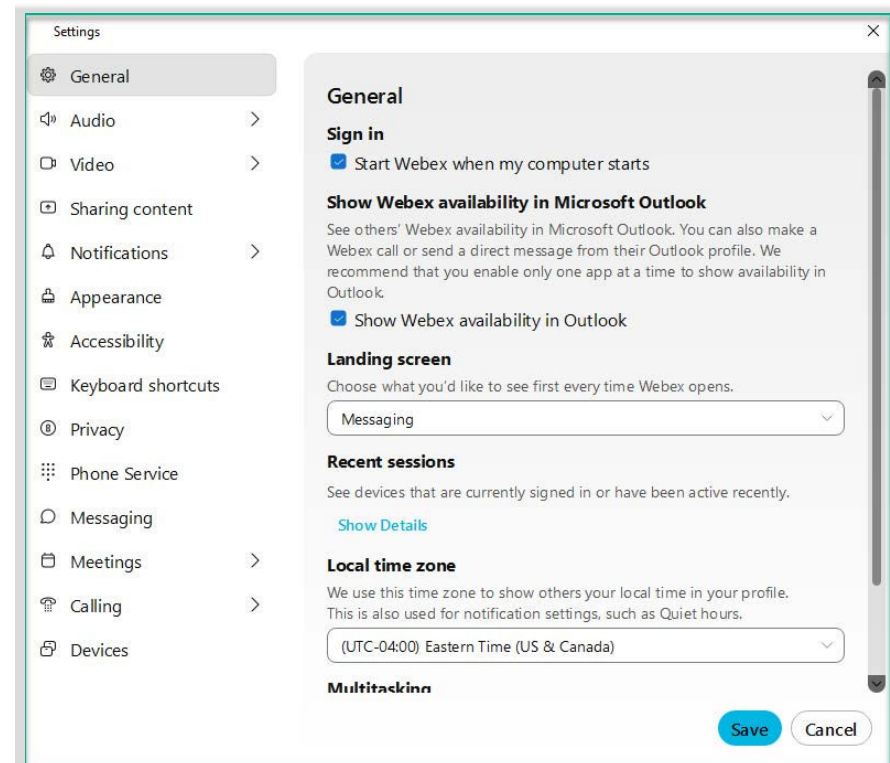


Manage profile and preferences

Click on your pic/icon to open the menu and change the display, update your pic and profile, set your status, access the Webex Help Center, access your **Settings**, download the mobile app, and sign out/exit the app

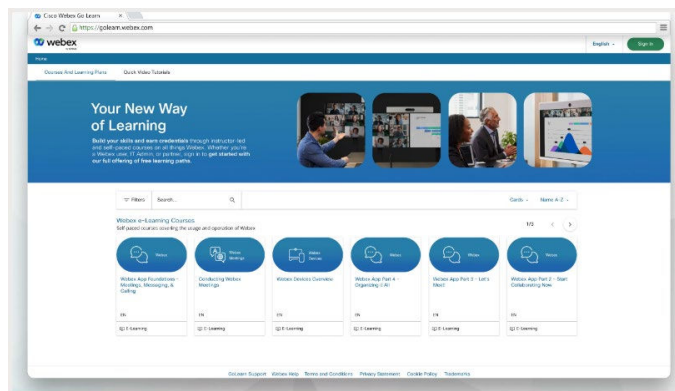
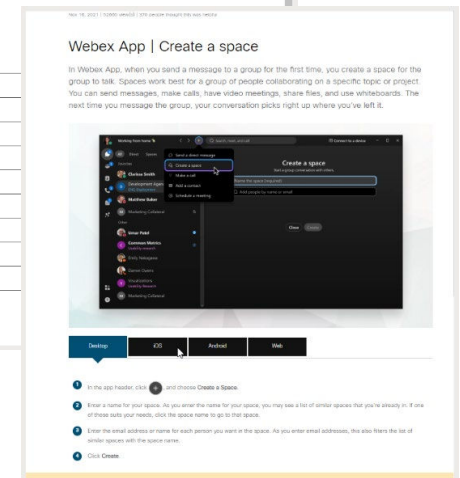
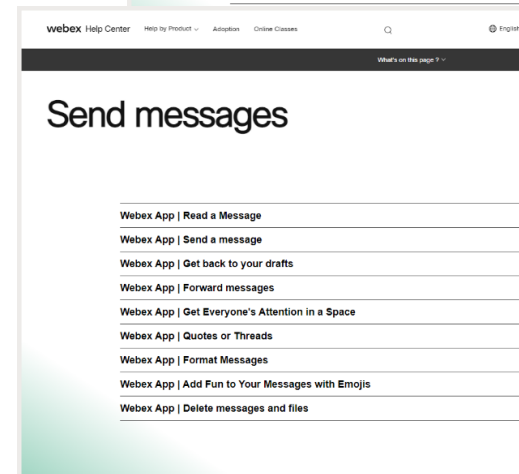
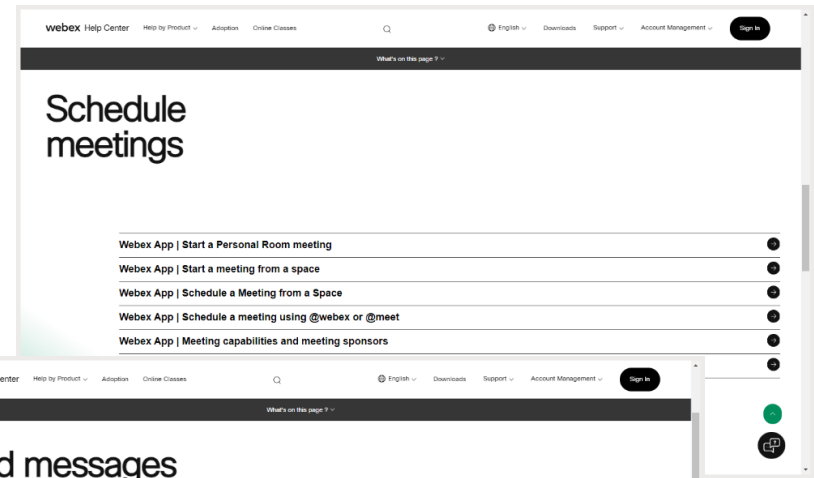
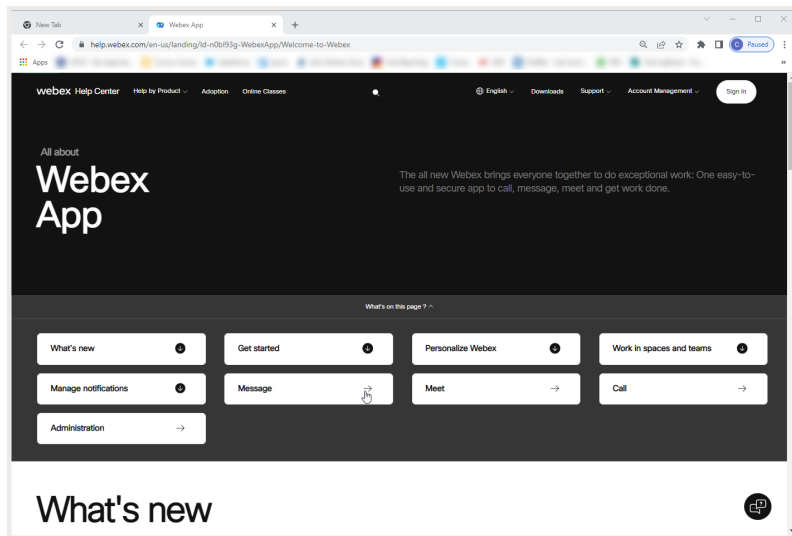
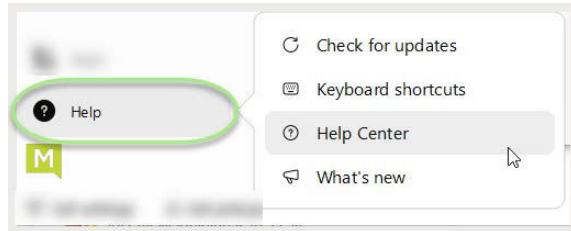
Manage Settings

Click on the **Settings** menu option OR the **Call Settings** link (bottom) to view and manage pretty much everything available to you in your app. Contact your organization's system admin for assistance if you find something you aren't authorized to change.



Help

Your Connect with Webex application includes access to an extensive Help Center. Click the [Help](#) icon at the bottom of the menu on the left and choose Help Center to open a browser and quickly find instructions, tips, and training for your Webex features.



After you have enabled your account, you can also check out the [GoLearn.Webex](#) site and look for Webex App User courses. This is the new learning and training course site offered by Cisco Webex and it is filled with useful information for users.